

NPA

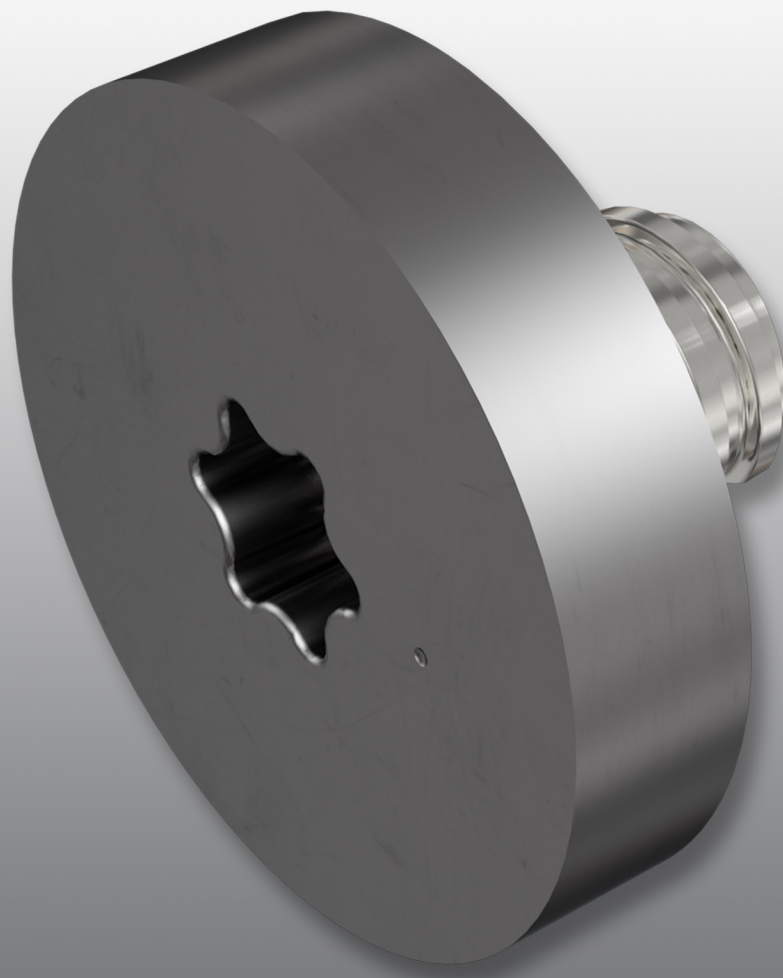
New Product Announcement

MILLING

16-2020

JUNE 2020 • METRIC

PAGE 1 / 3



MULTI-MASTER
INDEXABLE SOLID CARBIDE LINE

New MULTI-MASTER Blank Heads

MULTI-MASTER
INDEXABLE SOLID CARBIDE LINE

Highlights

New blank heads expand the application field of MULTI-MASTER products

Following customer demand, ISCAR is expanding the range of MULTI-MASTER products by introducing new MM TC blank heads made from uncoated cemented carbide. These semi-finished heads have two sections: a disk-shape front section with a TORX recess on the face and a rear section for MULTI-MASTER shaped adaptation.

The new heads are intended for producing various special items suitable for mounting on MULTI-MASTER shanks at the customer's machine shop. These items are designed for milling slots, grooves, threads, gears and splines, chamfers, specific profiles and many more.

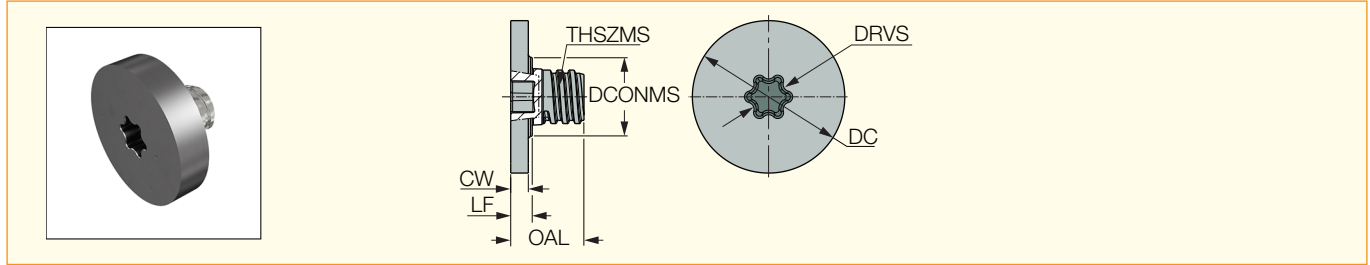
We believe that introducing the new heads will be a great help in customizing or manufacturing special MULTI-MASTER products.

The data that characterizes the blank heads is shown in the table below.

MULTI-MASTER
INDEXABLE SOLID CARBIDE LINE

MM TC-G

Interchangeable Cemented Carbide Blank Heads



Designation	Dimensions							Tough ↔ Hard	
	DC	CW	LF	OAL	DCONMS	DRVS ⁽¹⁾	THSZMS	IC28	IC08
MM TC138N-19-G-T05	13.80	1.90	2.50	9.60	7.60	20.0	T05	●	
MM TC138N-23-G-T05	13.80	2.30	2.90	10.00	7.60	20.0	T05	●	
MM TC138N-28-G-T05	13.80	2.80	3.40	10.50	7.60	20.0	T05	●	
MM TC138N-35-G-T05	13.80	3.50	4.10	11.20	7.60	20.0	T05	●	
MM TC138N-43-G-T05	13.80	4.30	4.90	12.00	7.60	20.0	T05	●	
MM TC171N-19-G-T06	17.10	1.90	2.75	9.40	9.25	25.0	T06	●	
MM TC171N-23-G-T06	17.10	2.30	3.15	9.80	9.25	25.0	T06	●	
MM TC171N-33-G-T06	17.10	3.30	4.15	10.80	9.25	25.0	T06	●	
MM TC171N-43-G-T06	17.10	4.30	5.15	11.80	9.25	25.0	T06	●	
MM TC171N-50-G-T06	17.10	5.00	5.85	12.50	9.25	25.0	T06	●	
MM TC234N-27-G-T08	23.40	2.70	3.30	11.25	12.00	40.0	T08	●	
MM TC234N-42-G-T08	23.40	4.20	4.80	12.75	12.00	40.0	T08	●	
MM TC234N-53-G-T08	23.40	5.30	5.90	13.85	12.00	40.0	T08	●	
MM TC234N-66-G-T08	23.40	6.60	7.20	15.75	12.00	40.0	T08	●	
MM TC234N-82-G-T08	23.40	8.20	8.80	17.35	12.00	40.0	T08	●	
MM TC234N-99-G-T08	23.40	9.90	10.50	19.05	12.00	40.0	T08	●	
MM TC286N-28-G-T10	28.60	2.80	3.65	15.40	15.30	40.0	T10	●	
MM TC286N-36-G-T10	28.60	3.60	4.45	16.20	15.30	40.0	T10	●	
MM TC286N-46-G-T10	28.60	4.60	5.45	17.20	15.30	40.0	T10	●	
MM TC286N-56-G-T10	28.60	5.60	6.45	18.20	15.30	40.0	T10	●	●
MM TC286N-66-G-T10	28.60	6.60	7.45	19.20	15.30	40.0	T10	●	
MM TC286N-83-G-T10	28.60	8.30	9.15	20.90	15.30	40.0	T10	●	
MM TC286N-93-G-T10	28.60	9.30	10.15	21.90	15.30	40.0	T10	●	
MM TC286N-103-G-T10	28.60	10.30	11.15	22.90	15.30	40.0	T10	●	
MM TC356N-60-G-T12	35.60	6.00	6.55	20.35	18.30	50.0	T12	●	
MM TC356N-100-G-T12	35.60	10.00	10.55	24.35	18.30	50.0	T12	●	●
MM TC356N-120-G-T12	35.60	12.00	12.55	26.35	18.30	50.0	T12	●	
MM TC356N-160-G-T12	35.60	16.00	16.55	30.35	18.30	50.0	T12	●	

• Do not apply lubricant to the threaded connection

⁽¹⁾ Torque Key size